

UNIVERSITY *of* WASHINGTON



DEPARTMENT OF
GLOBAL HEALTH

ANNUAL REPORT 2014

SCHOOL OF MEDICINE • SCHOOL OF PUBLIC HEALTH

www.globalhealth.washington.edu





100,000

CHEMICAL COMPOUNDS screened for ability to help stop Ebola through the work of Adjunct Professor Michael Gale Jr. and colleagues at Kineta, a Seattle biotech company.

1,800
DISEASES,

injuries, and health conditions measured for impact on disability and death by more than 1,000 researchers worldwide through IHME.

W = 4th
INNIH
RESEARCH
FUNDING

The University of Washington is fourth in the U.S. for National Institutes of Health research funding.

40%
REDUCTION
IN PREMATURE
DEATHS

possible with sustained international efforts over next two decades, according to the findings of Prof. Dean Jamison and Asst. Prof. Stephane Verguet.

\$31.3
BILLION

\$31.3 billion went to global health funding in 2013, a record high, according to research from Institute for Health Metrics and Evaluation (IHME). They also found that growth in global health spending slowed to 3.9% from 2012 to 2013.

INNOVATIONS: BE THE FIRST

Our innovative faculty, students, and staff are solving global health problems with immense curiosity, creativity and effectiveness. Most of these developments are made possible by strong partnerships with local experts and organizations, some of whom we have worked with for over 20 years. Here are just a few of their accomplishments.

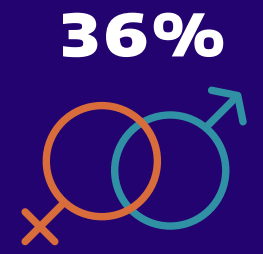


Local health workers at Dhulikhel Hospital in Nepal use a SmartVA verbal autopsy tool developed by the Institute for Health Metrics and Evaluation as part of the Dhulikhel Heart Study. PHOTO CREDIT: NICOLE IDE.



6
MINUTES

is the time it takes for an **HIV-preventing tampon** to distribute HIV-fighting microbicides. It was designed by a doctoral student in bioengineering working with global health researchers.



36%

REDUCTION IN RISK OF HERPES

with the use of the HIV drug Truvada among heterosexuals who were HIV negative, according to research from Professor Connie Celum, director of the International Clinical Research Center.

42%
REDUCTION
IN CASES
OF SYPHILIS



attributed to male circumcision, according to the findings of a recent study by graduate student Jillian Pintye, who studied epidemiology and global health, worked with Professor Renee Heffron, and won a prestigious Young Investigator Award at the 20th International AIDS Conference in Melbourne, Australia.

100s

OF EXPERTS AROUND THE WORLD



are using Assistant Professor Abraham Flaxman's computer program called DisMod-MR to track diseases around the world.

With over 130 partner organizations around the world, the Department's training and capacity building projects are improving health in more than 37 countries around world using a variety of approaches. Here are just a few highlights from a busy year.



PHOTO CREDIT: ANJULI WAGNER.

The on-the-ground team in Nairobi who helped the CATCH Study reach over 22,000 adults living with HIV to find undiagnosed children living with HIV. As a result of this new approach using active referrals in adult treatment programs, pediatric HIV testing rates increased fourfold. The study was coordinated by the Department's Global Center for Integrated Health of Women, Adolescents and Children (Global WACH).



PHOTO CREDIT: LEFT AND RIGHT: JESSICA DYER

IMPACT: PASSION NEVER RESTS

36,607 PEOPLE
TRAINED TO HELP IMPROVE HEALTH
AROUND THE WORLD INCLUDING:



- **2,343 trained in 37 countries** via online courses offered through the Global Health E-Learning Program.
- **1,400 users of newly implemented electronic medical records** implemented by International Training and Education Center for Health (I-TECH) in 340 clinics in Kenya.
- **60 researchers** in Kenya, Peru and Egypt trained in economic evaluation by the Disease Control Priorities Network.
- **50 Namibian physicians, pharmacists, and public health leaders** trained in medication safety and cost effectiveness by the Global Medicines program.



106,243

PREGNANT WOMEN

in Côte d'Ivoire received HIV Counseling and Testing at 197 health facilities supported by Health Alliance International.



3,000

pregnant women connected with their midwives via mobile phones in Timor-Leste through a program by Health Alliance International to help reduce maternal mortality.



1 silver award given to the Department of Global Health by Seattle Business Magazine for being an "Outstanding Global Health Organization."



50,000

voluntary medical male circumcisions performed to prevent HIV with support from I-TECH.

1 comprehensive outpatient center built in Gondar, Ethiopia with I-TECH's help that will provide **370,000 patient visits** and train **285 health care students** each year.



AUTUMN 2014
ENROLLMENT BY PROGRAM
n = 453

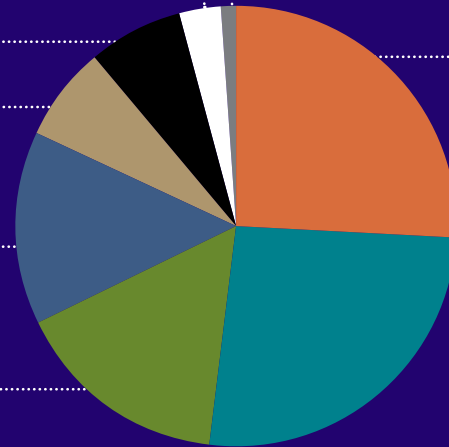
PhD in Global Health:
Health Metrics & Evaluation 3%

Graduate Certificates 7%

PhD in Pathobiology 7%

Fellowships 14%

Masters of Public Health 16%



Certificates for Residents
and Fellows 1%

Undergraduate
Minor 26%

Global Health Pathway
(Med. Students) 26%

PHOTO CREDITS: →
CLOCKWISE FROM TOP LEFT:
AMANDA KOSTER; COURTESY OF NICOLE
IDE; COURTESY OF TYSON HEGARTY;
JILL SCHONDEBARE.



OUR PEOPLE: BE A WORLD OF GOOD

OUR STUDENTS

8
DISTINCT
EDUCATION
PROGRAMS

- PhD in Global Health Metrics and Implementation Science
- PhD in Pathobiology
- MPH in Global Health
- Undergraduate Minor
- Residents & Fellows
- Graduate Certificates
- Global Health Pathway Certificate for Medical Students
- Post-Bac and Post-Graduate Fellowships



11.3%

of applicants were admitted into the PhD programs.

33
MAJORS
represented by our Global Health Minor students.

8

STUDENTS FROM CHINESE UNIVERSITIES studied at the Department through our new partnership with Chinese Universities and the China Medical Board.



CORRIE ORTEGA (Pathobiology, '14), awarded the Gilbert S. Omenn Award for Academic Excellence for the School of Public Health.

27
MEDICAL
RESIDENTS

did a clinical rotation in Naivasha, Kenya as part of the Clinical Education Partnership Initiative. In partnership with trainees from the University of Nairobi, residents worked under the supervision of the UW Internal Medicine Chief Resident based in Naivasha, and alongside Kenyan physicians and health care providers.

17
CONSULTING
PROJECTS

were completed by the Strategic Analysis, Research & Training (START) Center for global health organizations like the Bill & Melinda Gates Foundation.

1,000+
UW students took global health classes.

19 GRANTS provided to students and medical residents to travel abroad for research and fieldwork in **10 COUNTRIES,** totaling **\$75,000.**

203 GRADUATED from UW Seattle-based Global H-health programs.



TOTAL ENROLLMENT, 2008-2014



STUDENT DIVERSITY

68%

of our Pathobiology PhD students are women.



27%

of our MPH and PhD students are from countries outside the United States.



RACE & ETHNICITY: MPH AND PHD STUDENTS

TOTAL = 117

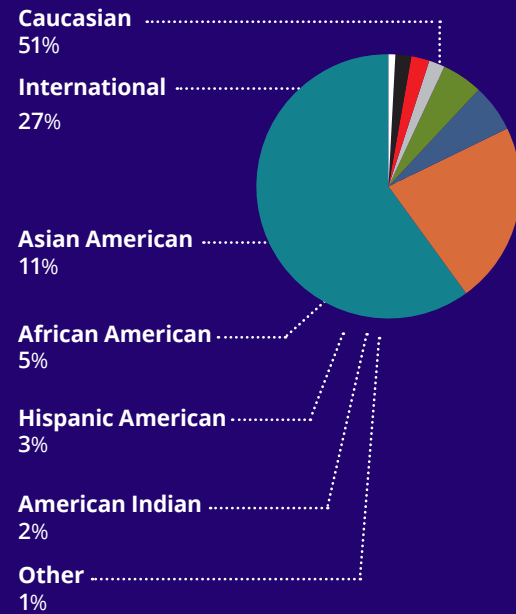


PHOTO CREDITS: →
LOCKWISE FROM TOP LEFT:
AMANDA KOSTER; UNKNOWN; COURTESY OF
CAMILLE PURONEN; JENNIFER LOOMIS.

TOGETHER WE WILL

OUR ALUMNI



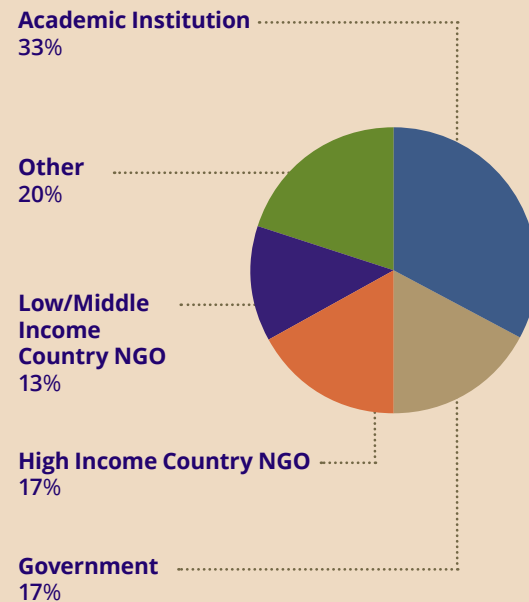
HAVE DEPARTMENT OF GLOBAL HEALTH ALUMN WORKING IN THEM.



ARE IMPROVING HEALTH AROUND THE WORLD.

ALUMNI: EMPLOYMENT SECTOR

N = 211



OUR FACULTY

15 of 16 schools are represented by our faculty.



TOP 10 FACULTY RESEARCH TOPICS:

1. HIV/AIDS
2. Health systems strengthening
3. Maternal child health
4. Pathobiology
5. Drug and vaccine development
6. STDs
7. TB
8. Infectious diseases
9. Malaria
10. Metrics and Evaluation



FEMALE DEPARTMENT CHAIR

Judith Wasserheit, MD, MPH.
Dr. Wasserheit is the first female department chair in history of the School of Public Health.



44 UW DEPARTMENTS are represented by our faculty's primary appointments.



OUR STAFF



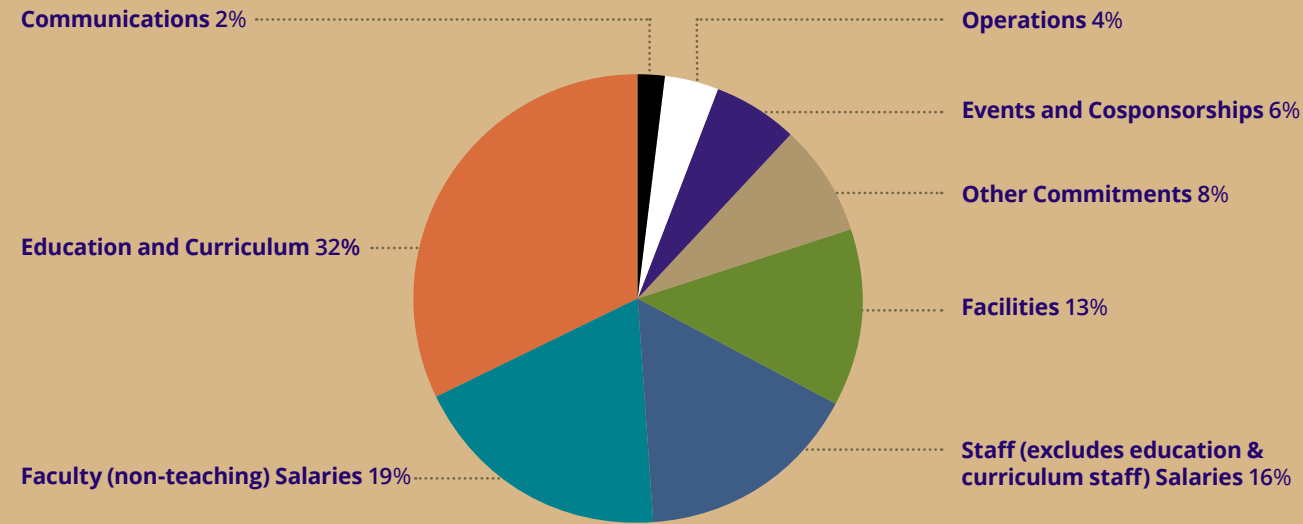
INTERNATIONAL STAFF



U.S.-BASED STAFF

ALUMNI DATA WAS SELF-REPORTED IN 2013 AND 2014.

OUR FINANCES



2014 CORE EXPENDITURES BY CATEGORY (US\$4.6 M)

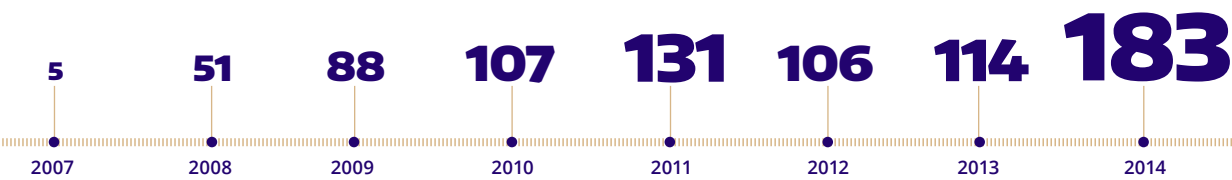
Core expenditures are the costs associated with running the Department including academic programs, and excluding grant-related work and the work of our centers and programs.

PHOTO CREDITS: →
 LOCKWISE FROM TOP LEFT:
 COURTESY OF REKHA RAVINDRAN;
 JESSICA DYER; COURTESY OF MELANIE GASPER;
 MONA WIGGINS.



GRANTS RECEIVED, 2007 -2014

TOTAL GRANTS (IN MILLIONS US\$)



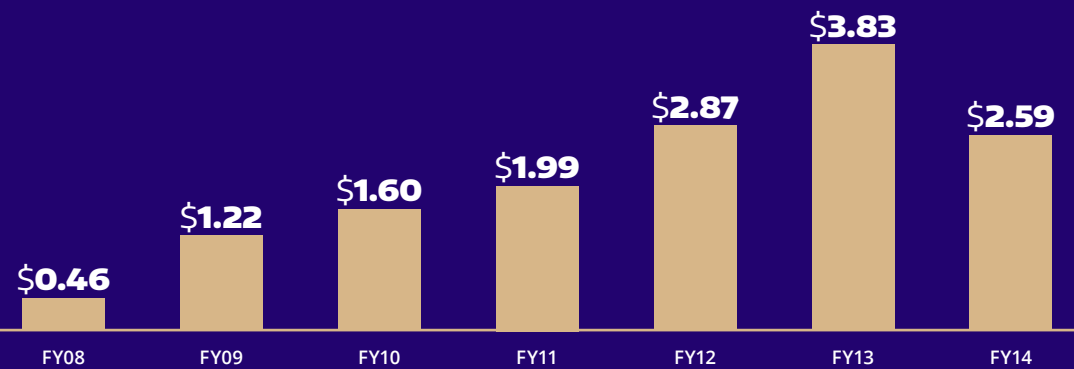
GRANTS AND CONTRACTS

In 2014 the Department received US\$183.3 million in grants and contracts, comprising 97% of our total revenue of US\$189.8 million. We remain the second largest Department in the University in terms of grants and contracts.

Revenue from grants and contracts increased 60% from fiscal year 2013 to fiscal year 2014.

RESEARCH COST RECOVERY

(IN MILLIONS US\$)



RESEARCH COST RECOVERY

Research Cost Recovery (RCR) is the allocation of funds that are generated from grant and contract indirect cost allocations. RCR was 1.48% of the total revenue for the Department. On average, the DGH receives 22.7% of total indirect costs that DGH faculty generate through research for UW.



DEPARTMENT OF GLOBAL HEALTH



PHOTO CREDIT: KARA MARSON.

PHONE 206.221.4970

FAX 206.685.8519

EMAIL DeptGH@uw.edu

WEB www.globalhealth.washington.edu

 @uwghrc

 [Global-Health-Resource-Center-UW-Dept-of-Global-Health](https://www.facebook.com/Global-Health-Resource-Center-UW-Dept-of-Global-Health)

COVER PHOTO CREDIT: PAUL NEVIN

DEPARTMENT LEADERSHIP:

Judith Wasserheit, MD, MPH

William H. Foege Endowed Chair

Stephen Gloyd, MD, MPH

Associate Chair for Education and Curriculum

King Holmes, MD, PhD

Director of Faculty Research & Faculty Development

Sally Weatherford, PhD

Director of Finance and Administration

44 DEPARTMENTS REPRESENTED BY OUR FACULTY

Allergy and Infectious Disease

American Ethnic Studies

Anesthesiology

Anthropology

Biobehavioral Nursing and Health Systems

Bioengineering

Biomedical Informatics and Medical Education

Biostatistics

Chemistry

Civil and Environmental Engineering

Department of Pharmacy

Dermatology

Emergency Medicine

Env. and Occ. Health Sciences

Epidemiology

Family Medicine

Fisheries

General Internal Medicine

Geography

Health Services

Immunology

Industrial & Systems Engineering

Laboratory Medicine

Medicine

Metabolism

Microbiology

Neurological Surgery
OBGYN

Oral Biology

Oral Health Sciences

Orthopedics

Pathobiology

Pathology and Laboratory Medicine

Pediatric Dentistry

Pediatrics

Psychiatry & Behavioral Sciences

Psychology

Psychosocial and Community Health

Public Health

Public Health Sciences

Pulmonary and Critical Care Medicine

Radiology

Surgery

Urology